

# LAS VEGAS INTERAGENCY COMMUNICATIONS CENTER

## 2021 Year End Report

---



*"BUILDING BETTER PARTNERSHIPS THROUGH BETTER COMMUNICATIONS"*

---

The Las Vegas Interagency Communications Center (LVICC) encountered a second record breaking year which included the total number of acres burned and the sheer number of dispatch incidents created. Though the number of fires was significantly less than the 2020 season the Southern Nevada Zone did see a 32% increase in the acres burned roughly 50,980 eclipsing the previous 16,265 from the 2020 fire season. This increase is likely due to the accumulation of fuels and the exceptional drought conditions that persist. Ninety-five percent of Nevada began the 2021 fire season in severe to exceptional drought conditions according to the US Drought Monitor. Reaching this level of drought is a cumulative process resulting from two winters with well below average precipitations (Anderson, 2021). According to the *Nevada Water Supply Outlooks* Report produced by Natural Resources Conservation Service (NRCS) southern Nevada's average seasonal precipitation accumulation (Oct 2020-Apr 2021) totaled 9.6 inches. This equated to a 39% soil moisture saturation, down from 48% the previous year (Anderson, 2021).

Citation: Anderson, J. (2021, May). Nevada Water Supply Outlook Report May 1, 2021. NRCS

The low moisture and chronic drought seemed to have prevented growth in the fine fuels in the lower elevations and could have limited the number of desert fires. However, this lower soil moisture also may have been the culprit to the higher acreage in the brush fuel component mainly within the Nevada National Security Site (NNSS).

As we come to an end for this 2021 fire season LVICC was steady for the entire year. During the Winter months we received 172 after hours calls. Varying from wildfires to random miscellaneous calls. The fire season really picked up in May with the Cherrywood fire and ran until about mid-October. LVICC was able to fill three Permanent Seasonal BLM positions this season. We kept the Center open 24hrs from the middle of May to the middle of September.

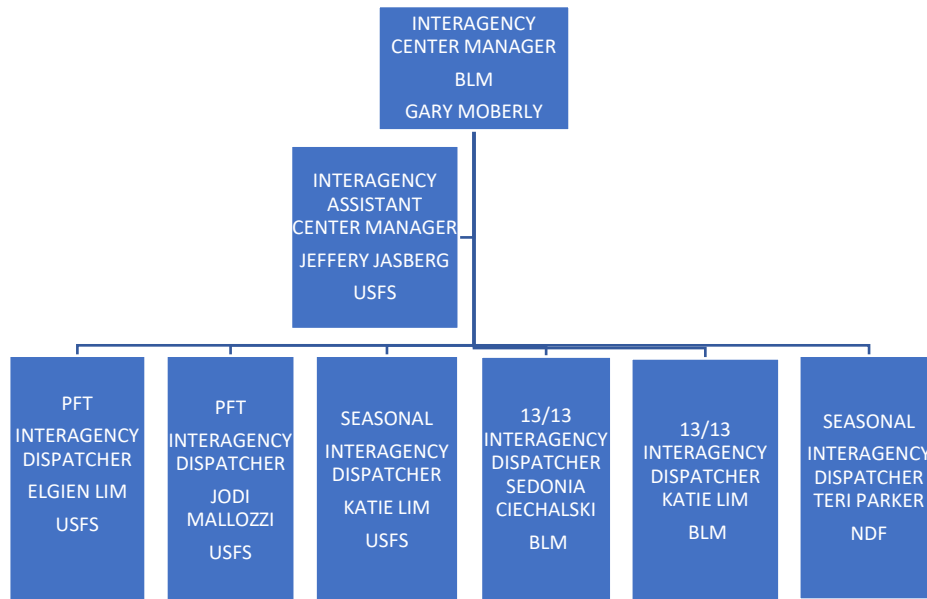
The total number of statistical wildfires within the zone was 194, reports show that 73% were human caused. Compared to 2020 this was nearly a hundred fires less than the previous year.

Nationally the 2021 fire season was unprecedented spending a record number of days at PL 5. LVICC began mobilizing resources as early as January to assist southern California and November for Arizona Rx program support. The center mobilized a total of 209 resource orders assisting incidents in all geographic areas excluding Alaska.

### **Quick Fire Statistics**

- 194 - wildfires
- 51,471- acres burned
- 86- False Alarms
- 51-days expanded dispatch was staffed
- 43 days Las Vegas Dispatch was at PL3 / 16-days at PL 4
- 79 – total days extending staffing

## LVICC Organization Chart



## Accomplishment and Highlights

- Expanded was open 51 Days open
- Nights of night shift 119 Nights open, 5/18-9/13
- Certified Taskbooks for 2021? 5- EDRC, 1-ACDP, 2-EDSD, 1-IADP
- 3 Veterans Tribute High School Dispatch Program- A.D.'s
- New equipment in the center i.e. Monitors/Chairs/TV for fire cameras
- Was able to have 12 additional rental vehicle trucks from Flex Fleet Equipment rental to supplement the NERV Enterprise rentals.
- Hired 3 Career Seasonal's through the BLM.
- Able to catch up with archiving of old fire records. Currently only holding on to 3 years of fire records
- Implemented the LVICC duty officer on top of the on-call dispatcher
- Hired one NDF seasonal dispatcher & one FS seasonal dispatcher

### 5 Year Average Fires

YEAR	USFS	BLM	NPS	USFWS	CCFD/ASSIST	NDF	DOD/NTE	TOTALS
2017	17	77	17	4	17	0	1	133
2018	23	41	16	3	8	0	2	93
2019	16	32	12	5	10	1	0	76
2020	25	179	30	16	23	4	1	278
2021	16	82	12	54	16	1	8	194
<b>TOTALS</b>	97	411	86	81	74	6	12	774
<b>5 YR AVG</b>	19	82	17	16	15	1	2	155

*\*Rounded to the nearest whole number.*

### 5 Year Average Acres

YEAR	USFS	BLM	NPS	USFWS	CCFD/ASSIST	NDF	DOD/NTE	TOTALS
2017	419	2312	6	1	27	NA	10,008	12,773
2018	41	147	52	3	57	0	3242	3,542
2019	2	4478	9	1	8	218	0	4,716
2020	5608	7281	5	154	86	1	3130	16,265
2021	2	1931	2123	12	88	1	47,401	50,983
<b>TOTALS</b>	6,072	16,149	2195	171	266	220	63,781	88,854
<b>5 YR AVG</b>	1214	3230	439	34	53	44	12756	17,771

*\*Rounded to the nearest whole number.*

2021 Fire Statistics

2021 NV-LIC FEDERAL AGENCY FIRE STATISTICS							NV-LIC PRESCRIBE FIRE	
NV-LIC INCIDENTS							BLM	
WILDFIRE	MISC	LE	MEDICAL	CDD ASSIST	A/C FF	TOTAL INCIDENTS	RX	ACRES
194	1226	51	16	4	65	1915	0	0.00
NV-LIC INCIDENTS							FS	
PUB ASSIST		SMOKE CHK	SAR	VEH. FIRE	RX	LAST INC. NUMBER	RX	ACRES
15		22	6	5	6	501915	1	256.40
BLM							FWS	
L	L- ACRES	H	H- ACRES	TOTAL FIRES	TOTAL ACRES	FA	RX	ACRES
7	11.98	75	1919.80	82	1931.78	52	2	186.10
USFS							LAP	
L	L- ACRES	H	H- ACRES	TOTAL FIRES	TOTAL ACRES	FA	RX	ACRES
10	1.30	6	0.60	16	1.90	17	1	4.00
USFS							NDF	
ABAN. CAMPFIRE	ILLEGAL CAMPFIRE	WILDERNESS FIRES	WILDERNESS ACRES				RX	ACRES
19	89	2	0.35				0	0.00
FWS							TSP	
L	L- ACRES	H	H- ACRES	TOTAL FIRES	TOTAL ACRES	FA	RX	ACRES
2	6.95	52	5.20	54	12.15	3	0	0.00
NTE-TEST SITE							NTE-TEST SITE	
L	L- ACRES	H	H- ACRES	TOTAL FIRES	TOTAL ACRES	FA	RX	ACRES
7	27601.00	1	19800.00	8	47401.00	1	0	0.00
NAFQ-NELLIS							NAFQ-NELLIS	
L	L- ACRES	H	H- ACRES	TOTAL FIRES	TOTAL ACRES	FA	RX	ACRES
0	0.00	0	0.00	0	0.00	0	0	0.00
LAP								
L	L- ACRES	H	H- ACRES	TOTAL FIRES	TOTAL ACRES	FA		
4	2122.20	8	1.50	12	2123.70	12		
TSP								
L	L- ACRES	H	H- ACRES	TOTAL FIRES	TOTAL ACRES	FA		
0	0.00	0	0.00	0	0.00	1		
LCL								
L	L- ACRES	H	H- ACRES	TOTAL FIRES	TOTAL ACRES	FA		
0	0.00	3.00	0.50	3	0.50	0		
<b>TOTAL STATS</b>								
L FIRES	L ACRES	H FIRES	H ACRES	TOTAL FIRES	TOTAL ACRES	TOTAL FALSE ALARMS	TOTAL BURNS	TOTAL ACRES
30	29743.43	145	21727.60	175	51471.03	86	4	446.50

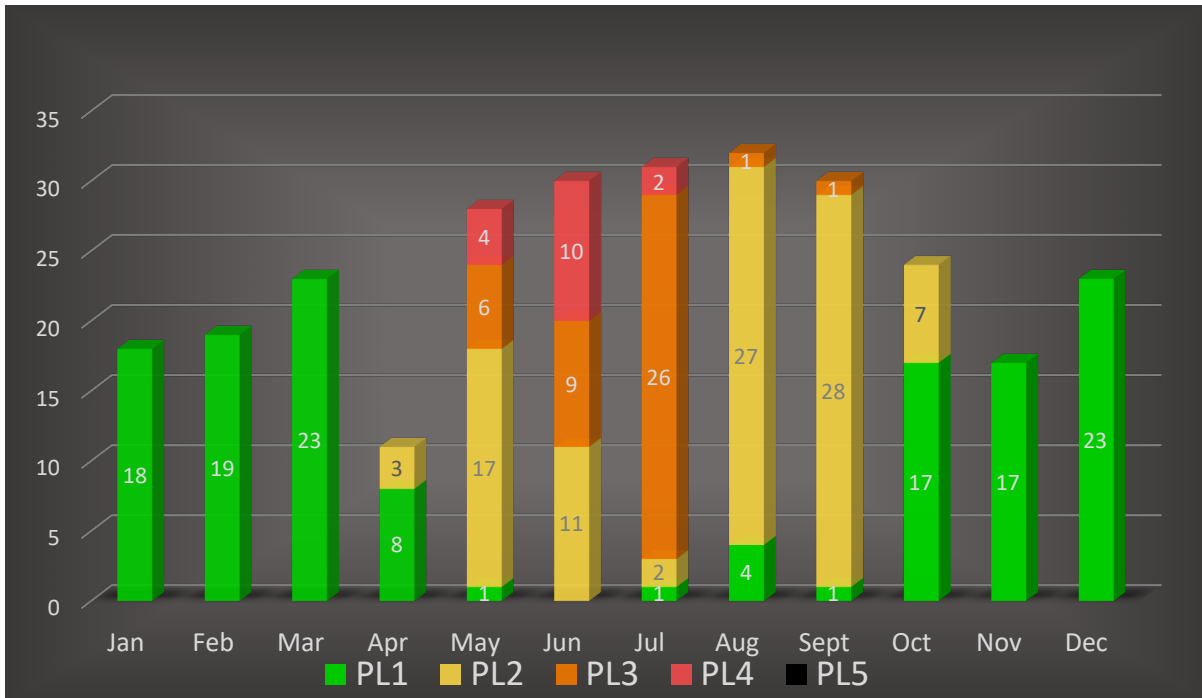
2021 NV-LIC STATE AND PRIVATE FIRE STATISTICS							NV-LIC PRESCRIBE FIRE	
<b>NDF</b>							<b>NDF</b>	
L	L-ACRES	H	H-ACRES	TOTAL FIRES	TOTAL ACRES	FA	RX	ACRES
0	0.00	1	1.00	1	1.00	0	0	0.00
<b>CCFD</b>							<b>CCFD</b>	
L	L-ACRES	H	H-ACRES	TOTAL FIRES	TOTAL ACRES	FA	RX	ACRES
0	0.00	16	87.70	16	87.70	5	0	0.00
<b>NYE CO.</b>							<b>NYE CO.</b>	
L	L-ACRES	H	H-ACRES	TOTAL FIRES	TOTAL ACRES	FA	RX	ACRES
0	0.00	2	0.70	2	0.70	0	0	0.00
<b>MESQUITE FIRE DEPARTMENT</b>							<b>MESQUITE FIRE DEPARTMENT</b>	
L	L-ACRES	H	H-ACRES	TOTAL FIRES	TOTAL ACRES	FA	RX	ACRES
0	0.00	0	0.00	0	0.00	0	0	0.00
<b>MOAPA FIRE DEPARTMENT</b>							<b>MOAPA FD</b>	
L	L-ACRES	H	H-ACRES	TOTAL FIRES	TOTAL ACRES	FA	RX	ACRES
0	0.00	0	0.00	0	0.00	0	0	0.00
<b>LAS VEGAS FIRE DEPARTMENT</b>							<b>LV FD</b>	
L	L-ACRES	H	H-ACRES	TOTAL FIRES	TOTAL ACRES	FA	RX	ACRES
0	0.00	0	0.00	0	0.00	0	0	0.00
<b>BOULDER CITY FIRE DEPARTMENT</b>							<b>BOULDER FD</b>	
L	L-ACRES	H	H-ACRES	TOTAL FIRES	TOTAL ACRES	FA	RX	ACRES
0	0.00	0	0.00	0	0.00	0	0	0.00
<b>MT CHARLESTON FIRE DEPARTMENT</b>							<b>CHARLESTON FD</b>	
L	L-ACRES	H	H-ACRES	TOTAL FIRES	TOTAL ACRES	FA	RX	ACRES
0	0.00	0	0.00	0	0.00	0	0	0.00
<b>HENDERSON FIRE DEPARTMENT</b>							<b>HENDERSON FD</b>	
L	L-ACRES	H	H-ACRES	TOTAL FIRES	TOTAL ACRES	FA	RX	ACRES
0	0.00	0	0.00	0	0.00	0	0	0.00
<b>TOTAL STATS</b>							<b>TOTAL STATS</b>	
L FIRES	L ACRES	H FIRES	H ACRES	TOTAL FIRES	TOTAL ACRES	TOTAL FALSE ALARMS	TOTAL BURNS	TOTAL ACRES
0	0.00	19	89.40	19	89.40	5	0	0.00

## Fire Danger Operating Plan Statistics

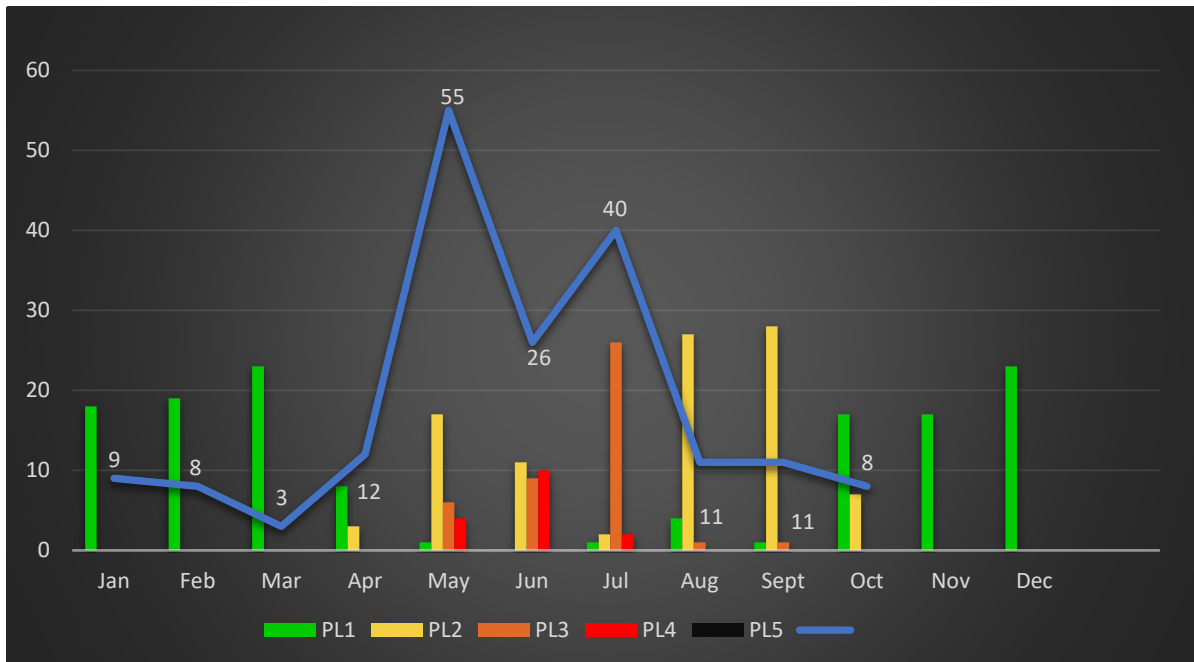
### Preparedness Levels

Figure 1 reflects the LVICC preparedness levels by month. This is calculated daily using the Fire Danger Operating Plan and forecasted indices. As shown in the graphs there appears to be more fires during the months with higher preparedness levels. The blue line in Figure 2 represents the number of statistical wildfires within the designated month.

**Figure 1 Preparedness Level Days by Month**



**Figure2 Preprdnss Level and Wildfires by Month**



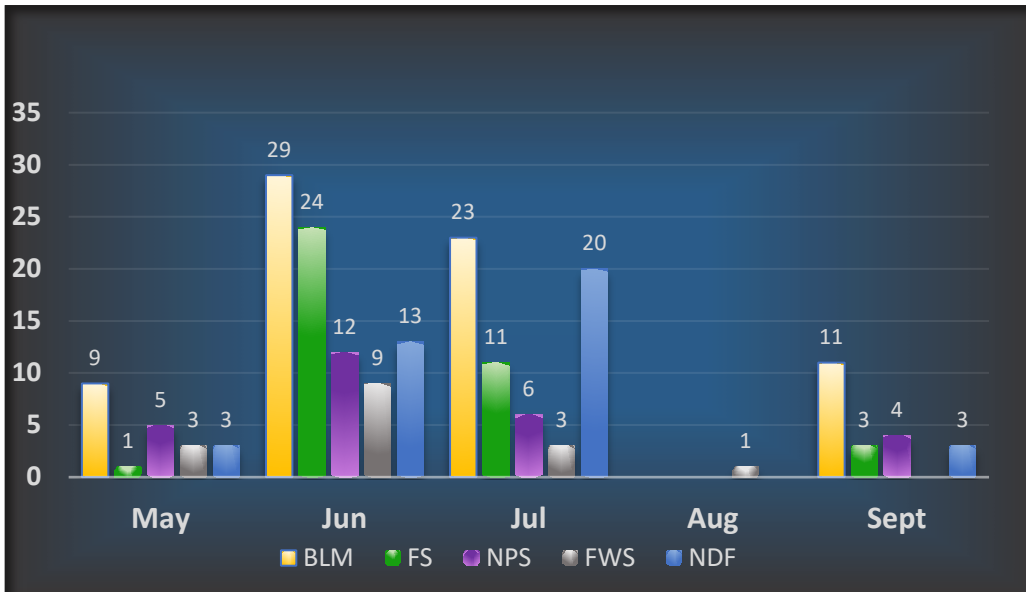
**Extending Staffing**

The following graphs capture the extensions during the fire season. There were 79 days that resources were extended beyond regular duty hours. Figure 3 shows the number of days each Agency chose to extend between May through September. Figure 4 has the total number of days extended and how often each agency chose to extend. For reference extended staffing for 2021 was 46 days fewer than the previous year which had a total of 125.

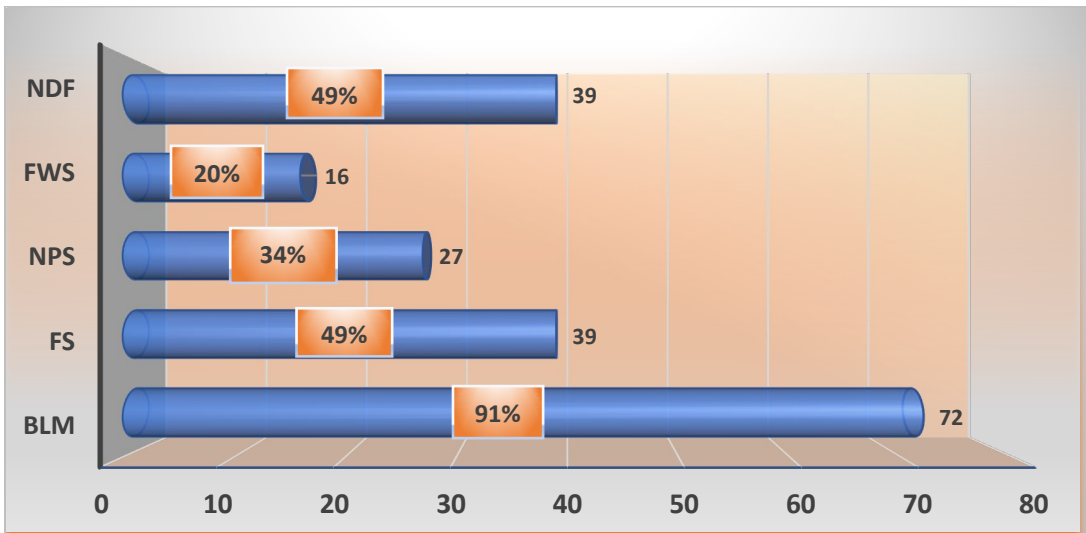
For example, the BLM extended staffing total of 72 days which is 91% percent of the 79 days of extensions.



**Figure 3 Agency Extension by Month**

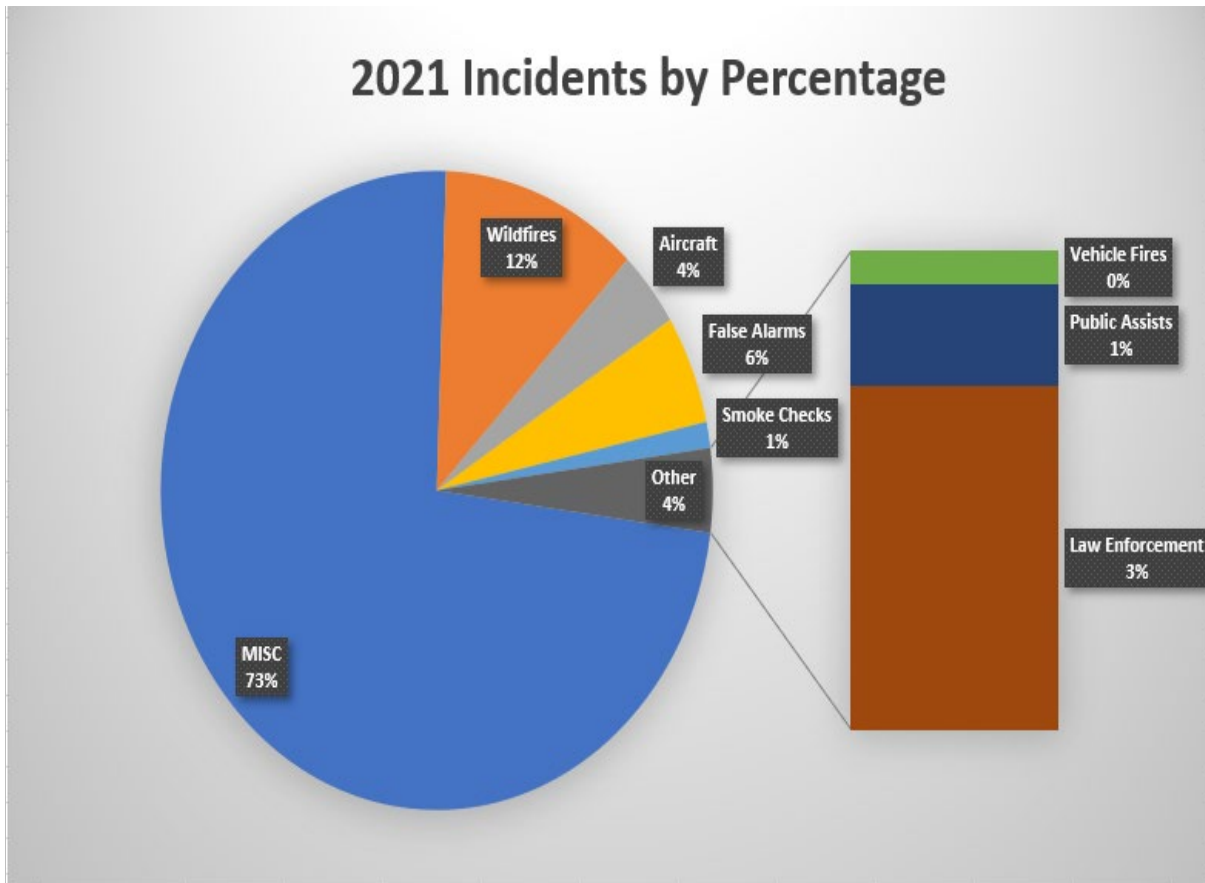


**Figure 4 Agency Extension Totals & Percentages of Frequency**



## Incident Actions

Las Vegas Dispatch created 1,915 # of inc. The following graph breaks out the types of incidents created during the 2021 fire season.



## Resource Order Overview

Las Vegas Dispatch created/received 1,966 orders that LVICC has been involved in for Local and National orders. The following illustrates the breakdown of orders in IROC.

